

GuideLines® and Mark-Through GuideLines® CT Grids for Localizing Needle Entry Sites

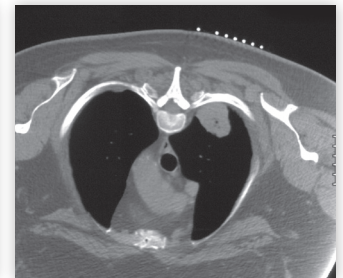
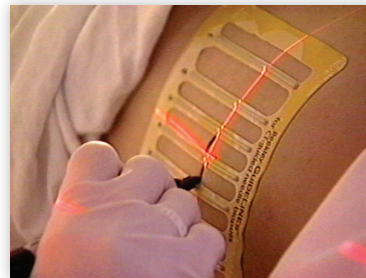
The Only CT-Biopsy Grids with Full-Adhesive Backing

Why Choose GuideLines?

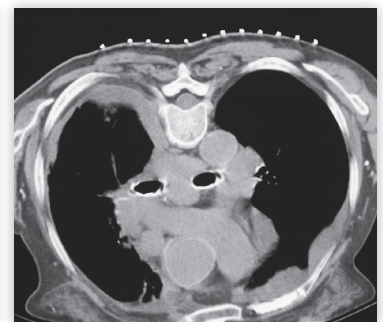
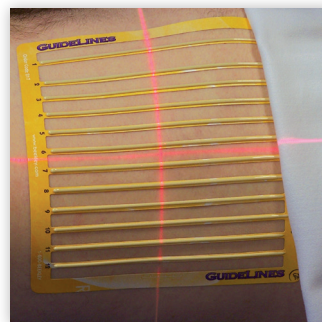
The GuideLines product family is easy to use and coated with an all-over adhesive backing that conforms to the natural curves of the patient's anatomy to avoid buckling, allowing the grid to lay flat on the skin ensuring accurate needle placement.

How Does Guidelines Help Get a More Accurate Biopsy?

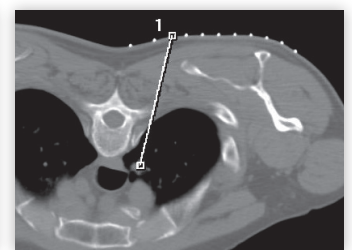
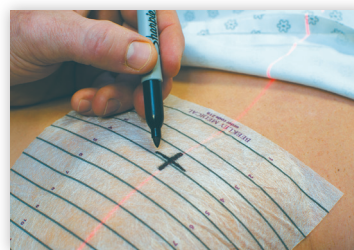
- **Minimizes Patient's Exposure to Radiation**
Adhesive fully covers the backing to prevent buckling and the need for repeat scan.
- **Aids Precision with Multiple Reference Points**
Helps to eliminate unnecessary attempts, increasing first stick accuracy.
- **Easily Identifies Orientation**
Extra spacing between grid lines 1 & 2 act as a landmark for right to left orientation
- **Saves Time**
Effortless and ready to use compared to other methods
- **May Help to Reduce Hospital Acquired Infections**
Sanitary, single-use, and easy to dispose



GuideLines REF 117



GuideLines REF 217



Mark-Through GuideLines REF 219



What Makes Mark-Through Guidelines Different from Other Porous Grids?

- ~Flexible grid with direct mark-through capability anywhere on the grid
- ~Does not buckle or shift once adhered to skin
- ~Ink transfers through grid instantly to clearly mark entry site
- ~Radiopaque lines are distinct on image for increased accuracy of needle placement

GuideLines® or Mark-Through GuideLines®

Which Biopsy Grid is Right for Your Patient?



THE GRID WITH RAISED LINES,
ONLY FROM BEEKLEY MEDICAL

GuideLines **REF** 117

4" x 5" Small grid with seven non-metallic lines

Ideal for:

- Planning a single-entry site
- Known location of entry site
- General-use grid for most biopsies
- Neck and other small areas



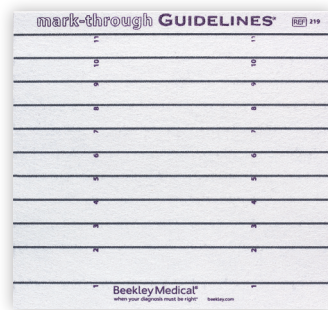
THE GRID WITH RAISED LINES,
ONLY FROM BEEKLEY MEDICAL

GuideLines **REF** 217

7" x 7.5" Large grid with twelve non-metallic lines

Ideal for:

- Larger patients
- Planning for multiple entry sites
- Abdominal, liver, or thoracic lesions
- Celiac Plexus Blocks
- Cryoablation



Mark-Through GuideLines **REF** 219

6.25" x 6.75" Grid


Ideal for:

- CT-guided biopsies
- Drainage procedures
- Pain management injections
- Arthrograms

To order or request a sample to try on your next CT-guided biopsy,
call 1.800.233.5539, email info@beekley.com, or visit beekley.com



Visit beekley.com for product safety information

 Manufactured by Beekley Corporation
One Prestige Lane, Bristol, CT 06010-7454 USA
+1.860.583.4700 Fax: 1.800.735.1234 beekley.com

BEEKLEY, BEEKLEY MEDICAL, GUIDELINES, MARK-THROUGH GUIDELINES, THE GRID WITH RAISED LINES, and WHEN YOUR DIAGNOSIS MUST BE RIGHT are Reg. U.S. Pat. & Tm. Off. BEEKLEY is a Registered Community Trademark. BEEKLEY is a registered trademark in Canada. PIK-UP is an unregistered trademark of Beekley Corporation.
© 2023 Beekley Corporation. All rights reserved.

 **EC REP**
EMERGO EUROPE
Westervoortsedijk 60
6827 AT Arnhem
The Netherlands

Beekley Medical®
when your diagnosis
must be right®



REV: GL-MTGL_INF_0523